



Combined Materials

- Stationary Ring(Carbon/SiC)
- Rotary Ring (Ceramic/SiC)
- Secondary Seal (NBR/EPDM/Viton)
- Spring and Punched Parts (Steel)

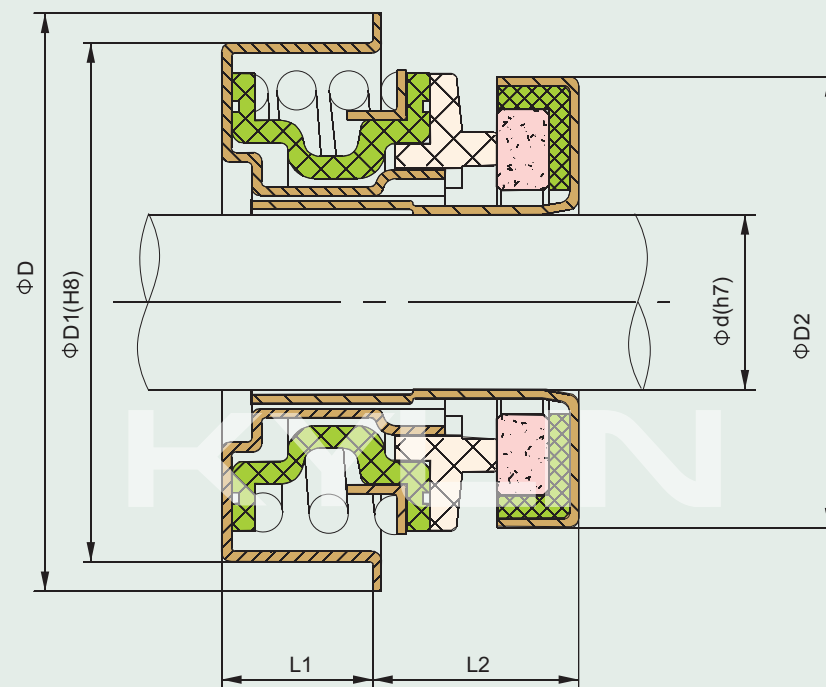
KY TYPE FB

Compatibility:

- Trisun TSFB

Working Conditions

- Mediums: Water, oil, and weakly-corrosive mediums, etc.
- Temperature: -20°C~100°C
- Pressure: $\leq 0.3\text{MPa}$
- Speed: $\leq 10\text{ m/Sec}$



Automotive Pump Seals

| Part# | d | D | D1 | D2 | L1 | L2 |
|-------------------|--------|------|-------|------|-----|-------|
| KY TYPE FB-12 | 12 | 35 | 30 | 25 | 8 | 9.7 |
| KY TYPE FB-12A | 12 | 38.5 | 33.4 | 25 | 6.7 | 11 |
| KY TYPE FB-12B | 12 | 32 | 28.55 | 25 | 8 | 9.7 |
| KY TYPE FB-13 | 13 | 35 | 30 | 25 | 8 | 9.7 |
| KY TYPE FB-15 | 15 | 41.5 | 36.45 | 30 | 8 | 11.2 |
| KY TYPE FB-5/8" | 15.875 | 41.5 | 34.2 | 30 | 5.6 | 12.25 |
| KY TYPE FB-5/8" A | 15.875 | 41.5 | 36.45 | 30 | 8 | 11.2 |
| KY TYPE FB-5/8" B | 15.875 | 41.5 | 38.1 | 30 | 8 | 11.2 |
| KY TYPE FB-16 | 16 | 41.5 | 36.45 | 32.5 | 8 | 11.2 |
| KY TYPE FB-16A | 16 | 41.5 | 38.1 | 32.5 | 8 | 11.2 |
| KY TYPE FB-20 | 20 | 43.8 | 38 | 37 | 9.5 | 12.5 |
| KY TYPE FB-20A | 20 | 43.8 | 40 | 37 | 9.5 | 12.5 |

▪ Add: A1001, Hebang Building, No.933 Tiantong North Road, Ningbo, China 315100

▪ Tel: +86-134-56162828

▪ Fax: +86-574-89069223

▪ Email: sales@kyltd.com